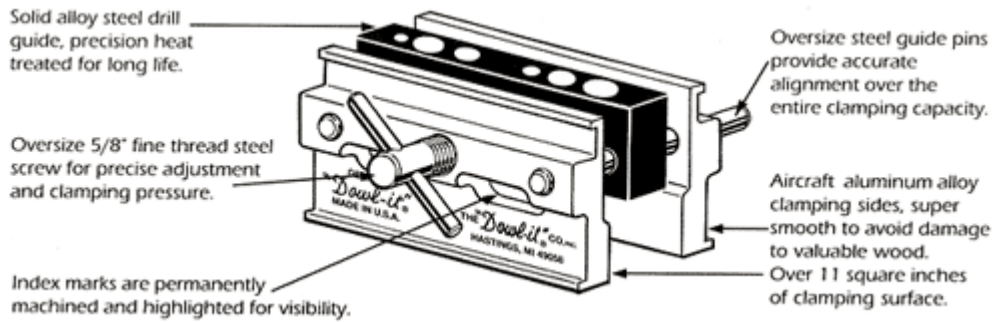


Doweling Jig Details



All parts manufactured in the USA



"Dowl-it"

The "Dowl-it" is the best doweling jig that a wood-worker can own. It is self-contained with nothing to get out of alignment.

The patented automatic self-centering action assures accurate center drilling every time, even on round objects. Large steel clamping screw tightens the tool like a vise with the rugged aluminum sides holding the work securely without damage to the wood.

The large capacity will handle most size requirements including production type jobs. The drill guide center is hardened and the guide holes are precision drilled and reamed for extreme accuracy. Hole size indicators are permanently cast in the sides and will not wear off.

The overall design and appearance lends itself to quality and precision and will give the user many years of trouble-free use.

This Tool Is Patented!

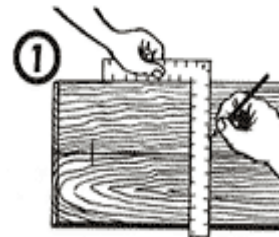
Beware of Imitations.

Look for the genuine "Dowl-it"

Trademark

Made in the USA

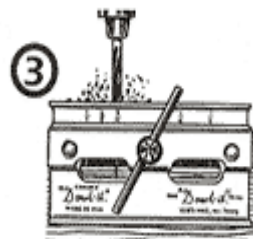
Easy To Use



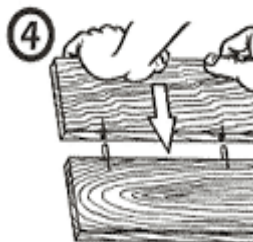
1. Mark both boards on side next to edge where dowel is to be located.



2. Clamp tool over edge with hole size index mark in line with mark on the board.



3. Drill dowel hole to desired depth. Remove tool. Hole will be exactly in center.



4. Apply glue to dowels and hole. Insert dowels in one board and then assemble other piece to match. Clamp.